

X-100⁺ User Manual

Statement

This handbook is the manual of X-100 + Auto Key Programmer expert. Without the written permission from the manufacturer, any company or individual shall not copy or backup it in any form (electronic, mechanical, photocopying, recording or otherwise). This manual is only operating instructions for X100+ Auto Key Programmer expert. If any result caused by using it on other equipment, the company does not assume any responsibility for it. ◦

If not quality problems of X100+: If equipment failure caused by user abuse, misuse, unauthorized disassembly, repair of the equipment yourself, not operating and maintaining by the instructions, lose it, repair will not be free. Other product names mentioned in this manual are in order to describe how to use X100+, and its owners are still the original company.

X-100+ Auto Key Programmer expert and files are used for normal vehicles maintenance; If used for illegal purposes, the company does not assume any liability.

Content

Chapter1: Summary.....	1
1.1Features.....	1
1.1.1 Universal.....	1
1.1.2Advantages.....	1
1.1.3Durability.....	1
1.2 introduction of the device	1
1.2.1The main unit and accessories.....	1
1.3 Hardware technical Specification.....	3
1.4 Functions Setting.....	4
1.4.1Car Models Selected.....	4
1.4.2System Setting	4
1.4.2.1 Language Selected.....	5
1.4.2.2 Contrast Adjustment.....	5
1.4.2.3Font Setting.....	5
1.4.2.4Metric / British.....	6
1.4.2.5Data Record.....	7
1.4.3System Information.....	7
1.4.4Device self-test.....	8
Chapter2:How to update software of X-100 ⁺	9
2.1Update tool software installation.	9
2.2Software Updating.....	11



Chapter1: **Summary**

1.1. **Features**

1.1.1. **Universal**

1.1.2. **Advantages**

- Providing multi-language environment so it can be used in different countries and regions.
- The main unit system uses ARM high-speed chip to keep it running fast, stable, and anti-jamming.
- Support updating with TF-SD card. You can update the software at any time.
- with modern design and high-definition true color screen to realize the integration of automotive industry and electronic information technologies and make auto diagnostic and key programming more easier, more practical and more economical.

1.1.3. **Durability**

- Integrity structure design, Drop and Shock Resistance, and durable.
- Industrial design to ensure the tool work stable in harsh environment such as high temperature, low temperature, etc,

1.2. **The introduction of the device**

1.2.1. **Main unit and accessories** (picture as below)



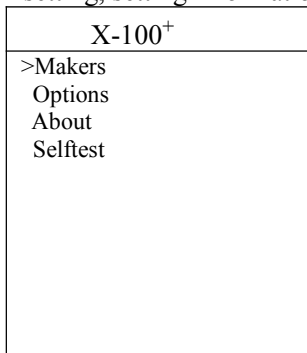
Name	Instruction
Testing cable interface	Connect to the main testing cable for key programming
USB interface	For connecting USB cable
TF Card Slot	To store diagnostic program and data
F1	Exit the menu or give up /Keyboard input option key
Left	To left
Enter	OK
ESC	Exit or give up
Screen	Show information
F2	Confirm the selection/Other functions option
Up	Up
Right	To right
Down	Down

1.3. **Hardware Specification**

- ★ Dimension: 19.2cm(L) *9.3cm(W) *2.9cm(H)
- ★ CPU: ARM7
- ★ Power Supply: DC12V
- ★ Operation Power: DC12V
- ★ **Operating Temperature:** -10-60°C
- ★ **Display Screen:** 160×160 TFT Screen

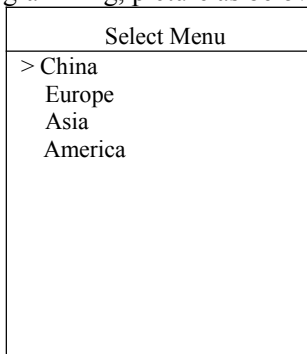
1.4. **Function Setting**

Power on and then press ENTER on the screen then go to the function setting, setting information as shown below:



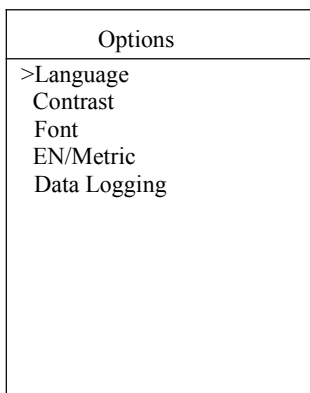
1.4.1 **Car Models Selected**

Make choice according to the car models that you want to do key programming, picture as below



1.4.2 **System Setting**

Select System Setting, then you can set the language, contrast, fonts, EN/Metric, data logging, as shown below.

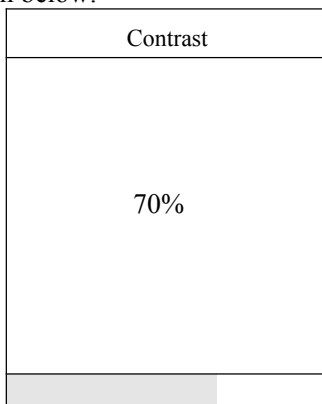


1.4.2.1 Language option

The instrument supports Chinese, Russian, Greek, Spanish, Italian and Traditional Chinese.

1.4.2.2 Contrast

Depending on the environment, adjust the brightness of the screen through the left and right buttons, as shown below:



1.4.2.3 Font

According to personal habits , choose the font through UP and Down key, and change the font through ENTER, as shown below: ◦

Font
>Small font Large font

1.4.2.4 EN/Metric

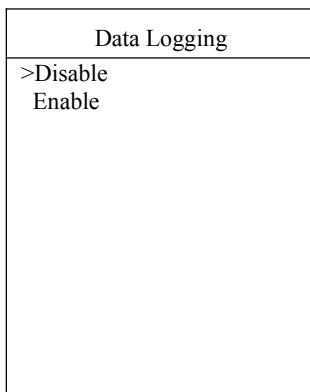
According to your needs, select the EN/Metric through the up and down keys, and press ENTER to switch, as shown below:

EN/Metric
>Metric English

1.4.2.5 Data Logging

If you have problems during the testing, please use the Data Recording function to record the testing process and send the data to us. If you want to use Data Record function, select “Enable” through the up and down keys and press ENTER to switch it, as shown below:

Remarks: Please select " Disable ", otherwise there will be not enough space in TF card after a long time



1.4.3 System Information

System information includes product serial number, hardware version, software version, release date, registration password, etc.

About
>S/N: 8122100100060 Hard Version: 4.00 Software: 4.00 Release Date: Mar 27 2012 password: 10610876 www.x100cn.com

1.4.4 Device self-testing

Device self-testing includes screen display, keyboard testing, hardware self-testing, etc. If it shows not enough pictures on the screen, keyboard not work, please return this X-100+ to the manufacturer.

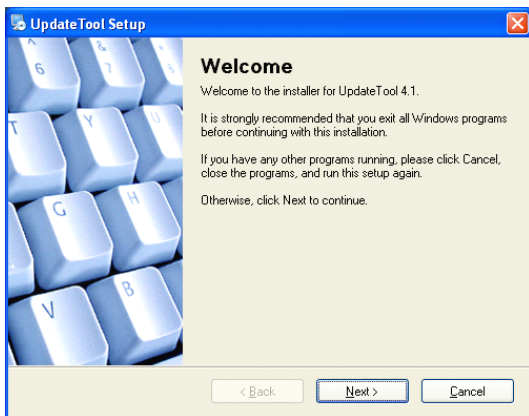
selftest
>Display Test Keypad Test

Chapter II: How to upgrade the software of X-100+

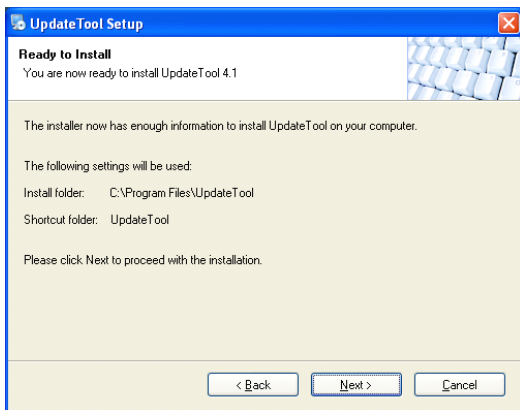
1.5. Update tool software installation

1.5.1. Download the updating tool and diagnostic software on www.x100cn.com, double click , then go to the next step:

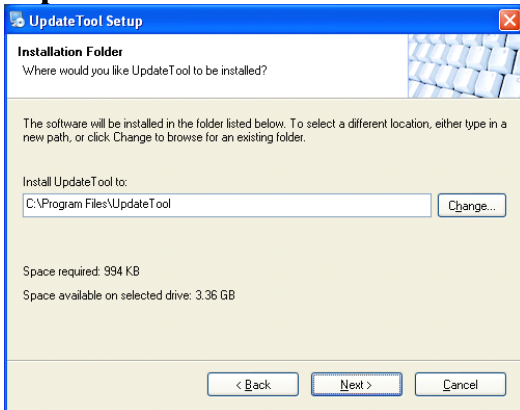
Step 1: click “Next”



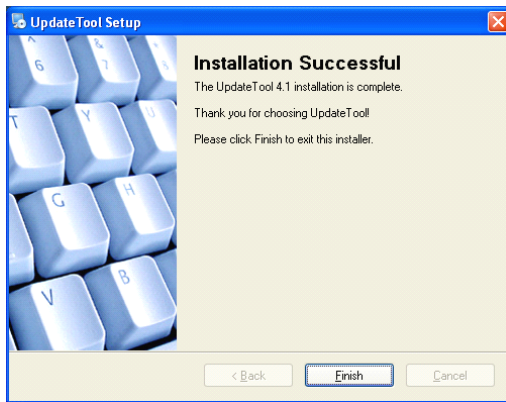
Step 2: click “Next



Step 3: click “Next”



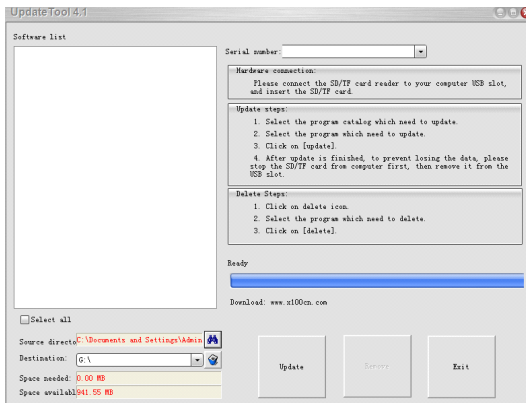
Step 4: Click “Finish”



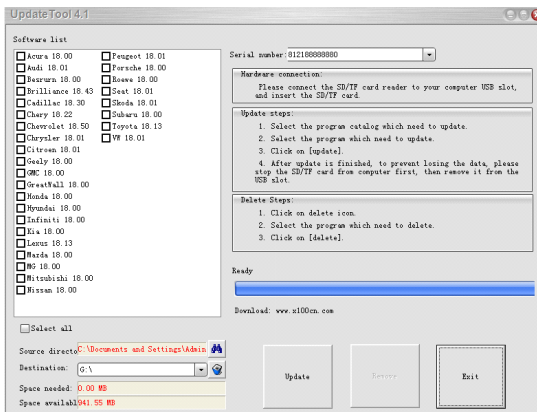
1.6. Software Updating

1.6.1. **After the Update tool installation is complete, click the UpdateTool software icon on desktop to start the update tools. Operation steps as following:**

1.6.2. **Step 1: Open updateTool**

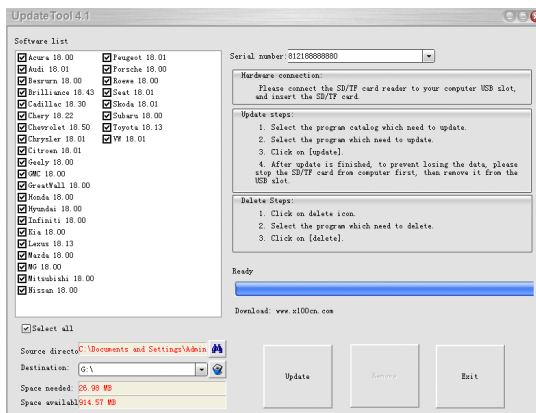


Step 2: click the source menu, choose the program you want to update, click it and confirm



Step 3: click and select all the software then click “update”

Step 4: wait for several minutes then the updating finished



Remarks: For new updating software and questions during updating, please contact your distributor.